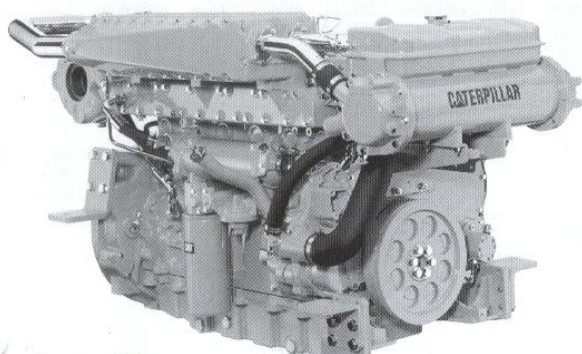


CATERPILLAR®



Shown with
Accessory Equipment

STANDARD ENGINE EQUIPMENT

- Air inlet
 - aftercooler, air cleaner, watercooled turbocharger
- Cooling
 - thermostat, jacket water pump, sea water pump, integral heat exchanger/expansion tank
- Control system
 - Electronic Control Module (ECM)
 - engine-mounted sensors
- Exhaust
 - watercooled exhaust manifold, 6-inch round flanged outlet
- Flywheel and flywheel housing
 - SAE No. 1
- Fuel
 - secondary filter, priming and transfer pumps
- Instrumentation
 - service meter
- Lubricating
 - oil cooler, oil filter, center sump oil pan

Marine Engine

3196

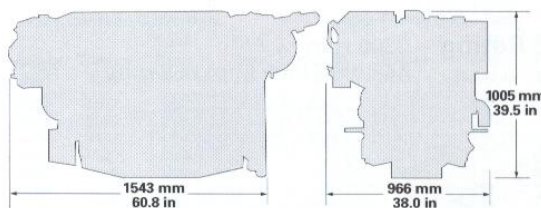
365-492 bkW/490-660 bhp
2300 rpm

CATERPILLAR® ENGINE SPECIFICATIONS

I-6, 4-Stroke-Cycle-Diesel

Bore — mm (in)	130 (5.1)
Stroke — mm (in)	150 (5.9)
Displacement — L (cu in)	12 (729)
Rotation (from flywheel end) ..	Counterclockwise
Compression Ratio	16:1
Capacity for Liquids — L (U.S. gal)	
Cooling System (engine only)	45 (12)
Lube Oil System (refill)	28 (7.5)
Oil Change Interval	9475 (2500)/fuel
Engine Weight, Net Dry	
(approx) — kg (lb)	1177 (2590)
Governor	Electronic

DIMENSIONS



Power produced at the flywheel will be within standard tolerances up to 50° C (122° F) combustion air temperature measured at the air cleaner inlet, and fuel temperature up to 70° C (158° F) measured at the fuel filter base. Power rated in accordance with NMMA procedure as crankshaft power. Reduce crankshaft power by 3% for propeller shaft power.



